

Bringing glass recycling back to Northwestern PA!



Contact:

Nicholas Bruno
Managing Director
(814) 923-6380

John Nowakowski III
Technical Director
(814) 464-5880

admin@bayfrontglass.com
1310 East Ave, Erie, PA 16503



PROBLEM

Glass was eliminated from Erie County business recycling since 2016 and most residential recycling programs since Jan 2018

Eliminating glass from recycling programs leads to:

1. Increased waste generation
2. Lost economic opportunities
3. Concerned residents & business owners





SOLUTIONS

- ▶ [Harrisburg](#) & [Pittsburgh](#), PA: drop off collection & consolidation points
- ▶ Kansas City, MO: [Ripple Glass](#) annually processes 44,000 tons of waste glass containers
- ▶ Andover, NJ: [Pace Glass](#) building \$55 million facility to serve NY, NJ, CT, MA, VT, & NH
- ▶ [El Paso, TX](#) & other municipalities: small-scale processing into glass aggregate





STANDARD RECYCLING LOOP





BY THE NUMBERS

Erie County, PA	Number
• # of communities in Erie County PA	38
• # of recyclable glass container collection services	3*
• # of recyclable glass container processing facilities	0
• Tons of recyclable glass containers landfilled annually	>10,000 (est.)

* Millcreek Township, Edinboro & Corry, but very little, if any, of the glass collected actually makes its way into the supply chain for glass container manufacturing.

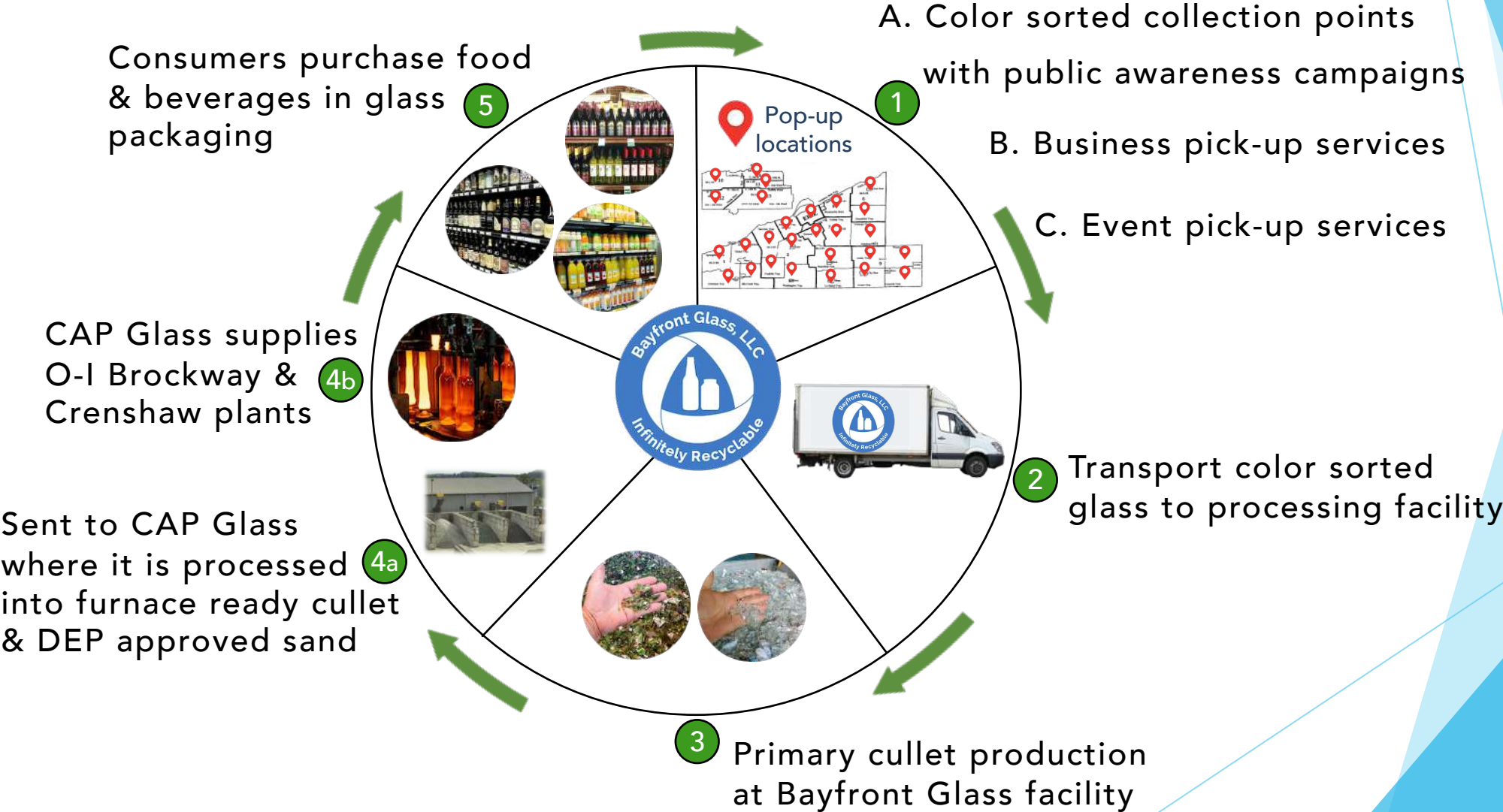
SOLUTION



A **streamlined system** to collect and locally process recyclable glass for the glass container manufacturing industry.



BAYFRONT GLASS RECYCLING LOOP





KEY ELEMENTS

1. Partnerships

- ▶ Governments, universities, businesses, 501(c)3 organizations
- ▶ In-kind contributions – public awareness, promotion and use of public/private space for collection events & drop-off points

2. Area waste reduction

- ▶ Public pop-up collection events & drop-off locations
- ▶ Collection services – residential, commercial, post-industrial
- ▶ Event collection services – festivals, parties, weddings, etc.

3. Local value-added processing

- ▶ Generate local economic activity & create jobs
- ▶ Cullet for regional glass container manufacturers



POP-UP EVENTS



Green Shoppe



Borough Of
Wesleyville



FESTIVAL COLLECTIONS





INDUSTRIAL COLLECTION



///HANES *ERIE, INC.*



COMMERCIAL SERVICES

Bars, Restaurants, Clubs, Businesses

Cart Size + Quantity

Depending on the volume of recyclables you generate, choose the cart size that **best suits your needs**. Then assess how much **space you have** for the carts using the dimensional data in the chart.

Pickup Frequency

After examining your available space and projected volume, determine how long it will take to fill the carts in order to choose how often you will need service.

***Note:** seasonal or special event pickup services are available upon request. We can also arrange for a case pickup service.*

Cart Size	Dimensions & Capacities		
35 gallon	Width	Depth	Height
	18.5 "	24.1 "	37.5 "
	~270 beer bottles (12 oz) ~120 wine bottles (750 ml)		
65 gallon	Width	Depth	Height
	26.7 "	28.1 "	41.3 "
	~500 beer bottles (12 oz) ~220 wine bottles (750 ml)		
95 gallon	Width	Depth	Height
	29.2 "	33.3 "	43.5 "
	~730 beer bottles (12 oz) ~320 wine bottles (750 ml)		



CULLET PRODUCTION



Unrefined cullet sold to CAP GLASS of Mt. Pleasant, PA for further processing for the glass container industry.

Numbers to date since August 2019:

- 11 pop-up collection events, 3 festivals
- 50 tons collected
- 20 tons processed into unrefined cullet

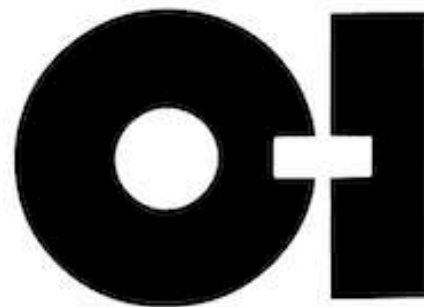


CULLET BUYERS

(within 200 miles of Erie, PA)



CAP Glass
Mount Pleasant, PA



Owens-Illionois
Brockway & Crenshaw, PA



Elmira, NY



ArdaghGroup

Port Allegany, PA



OPPORTUNITIES

MUNICIPAL COLLABORATION

- 1. Drop-off locations**
- 2. Residential curbside service**
- 3. Public-Private Partnerships**
 - DEP Recycling Performance Grants**
 - Other grant opportunities**

Bringing glass recycling back to Northwestern PA!



Contact:

Nicholas Bruno
Managing Director
(814) 923-6380

John Nowakowski III
Technical Director
(814) 464-5880

admin@bayfrontglass.com
1310 East Ave, Erie, PA 16503